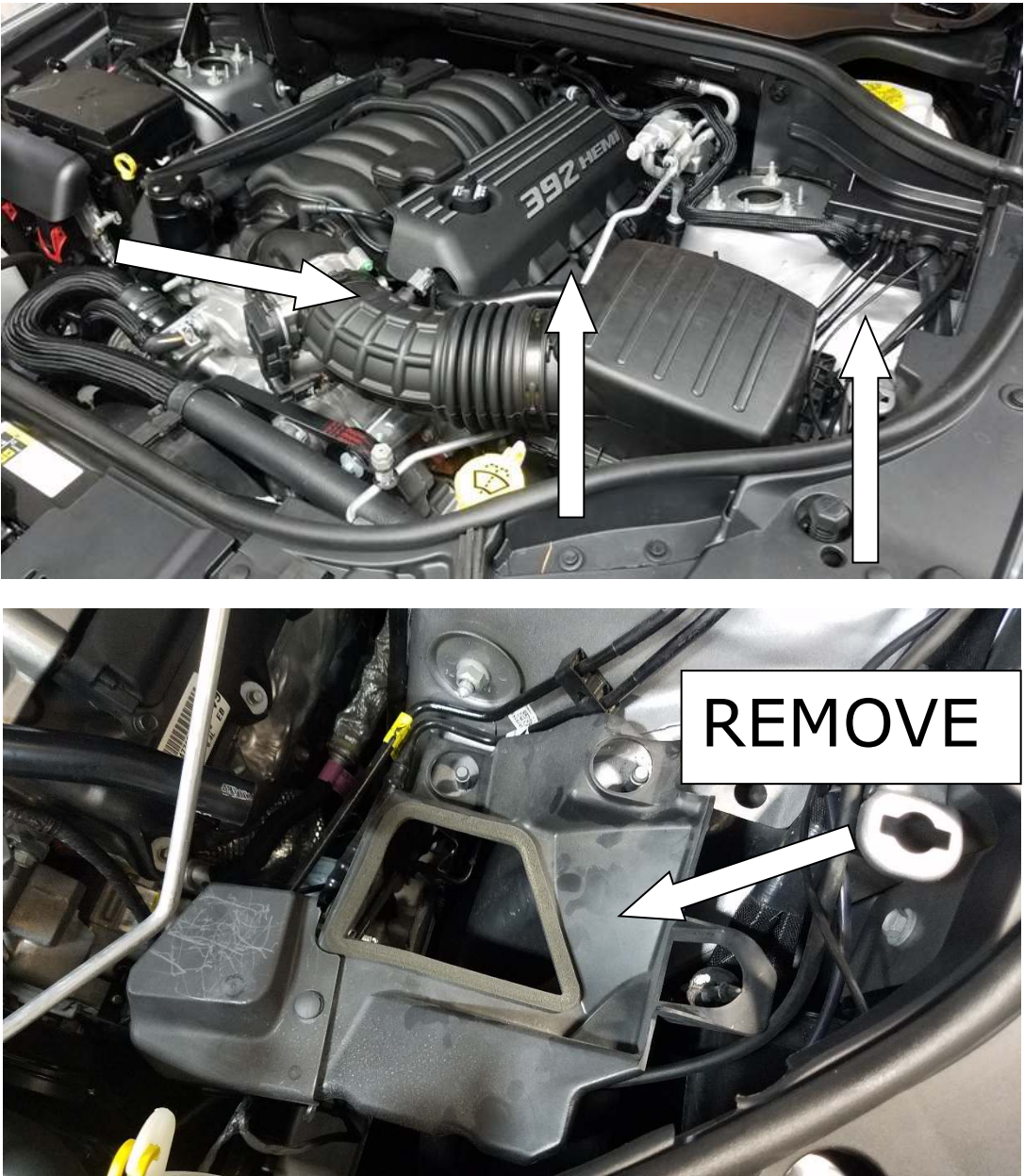


## Installation Instructions - JLT Cold Air Intake 2012-2020 6.4L/392 SRT #CAI-SRTJ-12

Thank you for purchasing our product. We hope you are satisfied with the look and performance. If you have any questions, please feel free to call us first before going to the internet. Take your time and it will be a smooth install.

**Please review complete instructions prior to installing.**

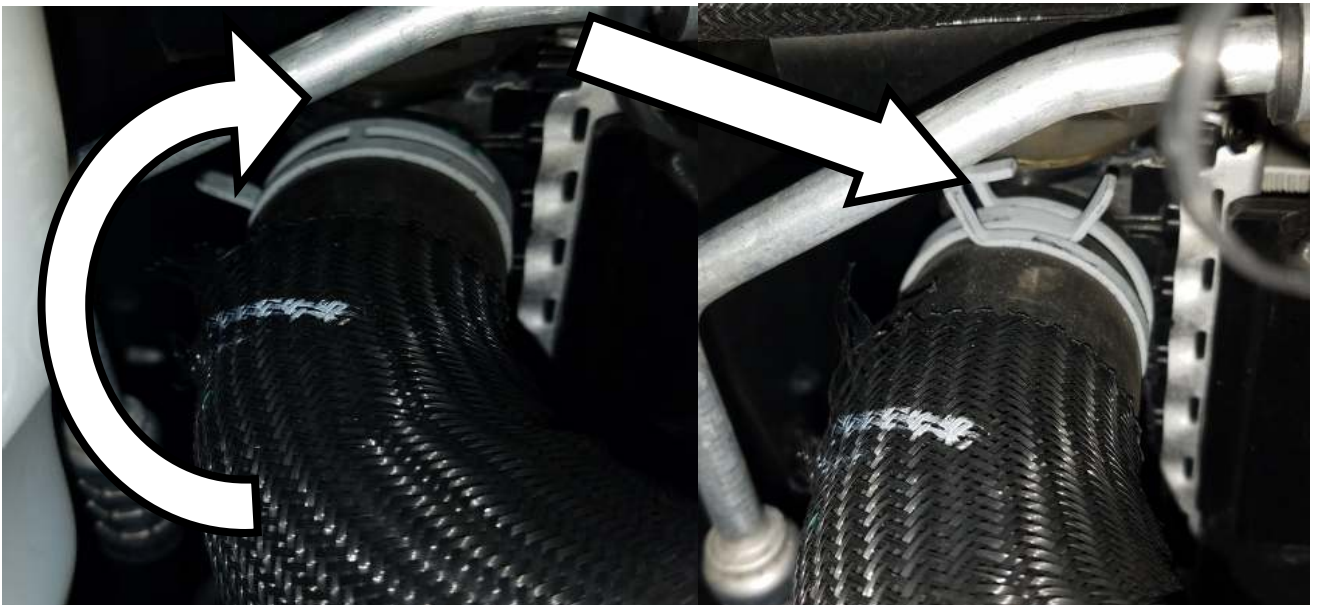
We find it easiest to install the kit as a complete assembly; however, it can be done one piece at a time. Here is a walk through:

Step#	
1	<p><b>Verify you have all of the following parts included in the kit:</b>                      (1) JLT Plastic Intake Pipe with PCV fitting and IAT grommet, (1) 4"-3.5" Silicone Elbow, (1) 5"x7" Air Filter, (1) JLT Heat Shield, (1) 64 Clamp, (1) 56 Clamp, (1) Push nut</p>
2	<p><b>Gather all of the following tools needed for the installation:</b>                      5/16 Nut Driver, Flat screwdriver, needle nose pliers, 10mm Socket and Ratchet</p>
3	<p>Remove the stock intake from the throttle body to the airbox.                      Loosen clamp at the throttle body, unplug IAT sensor and PCV line, PULL UP on airbox and remove from the car.                      Also remove the shield under the stock box as shown:</p> 

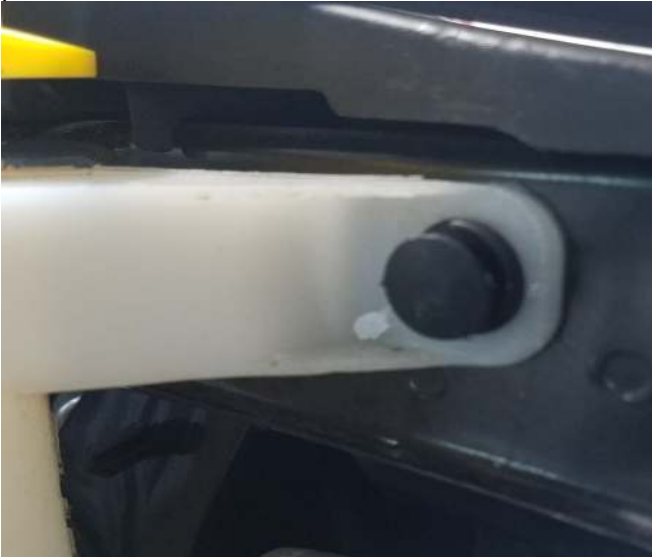
4 Remove the IAT sensor from the stock tube and install into the grommet in the JLT tube.



5 Remove the push pin holding the washer fluid tank to the radiator support. **USING NEEDLE NOSE PLIERS, ROTATE UPPER RADIATOR HOSE CLAMP TO THE TOP OF THE HOSE LIKE SHOWN.**



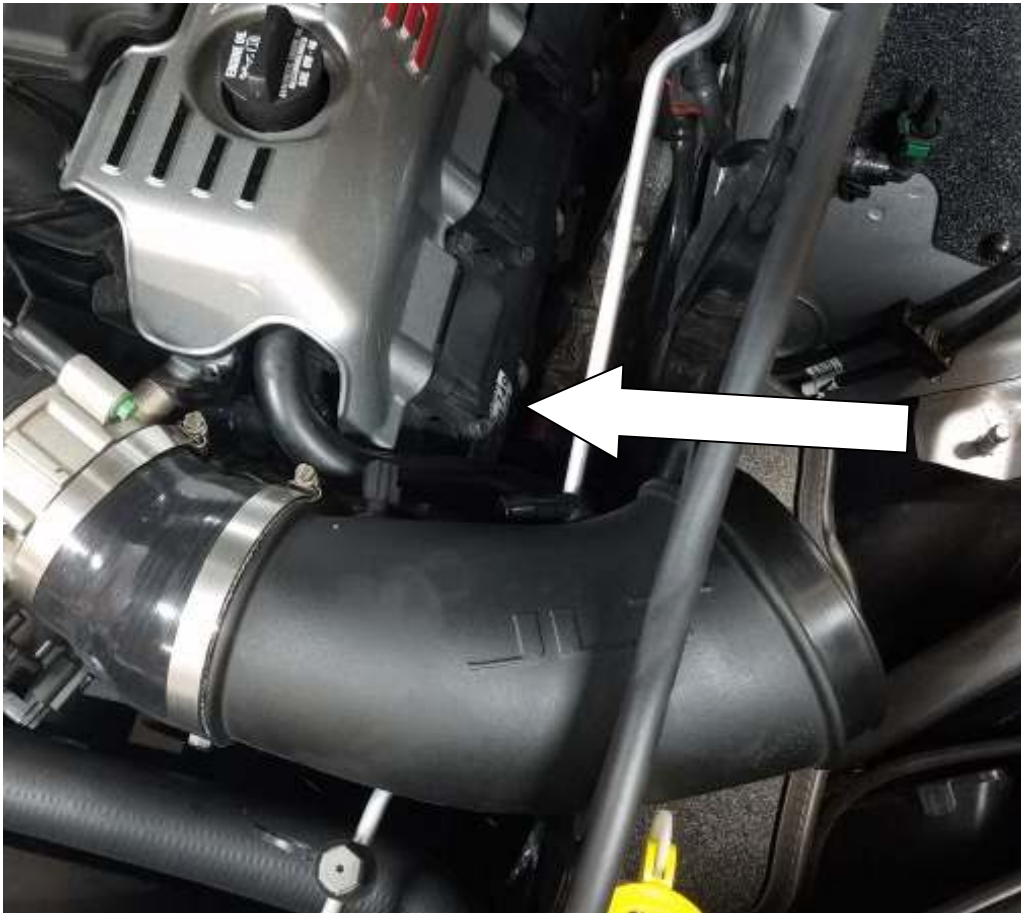
6 Lower heat shield down between the radiator and washer tank and down onto the stud on the apron. Secure the shield on the stud with the supplied push nut and reinstall the washer push pin.







- 7** Install the elbow and clamps onto the tube and loosely connect to the throttle body by guiding it through the hole in the airbox from the inside.



**TWIST ELBOW AND TUBE TO GET THE PROPER ANGLE INTO THE HEAT SHIELD.**

- 8** Install air filter, plug in IAT sensor and PCV connection and HAND tighten all clamps.

- 9** **CARB E.O. No. D-761-5**  
Place the supplied CARB EO sticker under the hood in a visible location.



**Oil Filter:** The frequency you should clean your filter will depend on your driving conditions. It is recommended to check your filter at every oil change or 3,000 miles. If there is a build up of dirt as thick as the wire mesh, then it's time to clean your filter.

To properly clean your oil filter, we recommend the S&B Precision Cleaning & Oiling Kit (located in the Parts Sold Separately Section of our website, [www.JLTtruecoldair.com](http://www.JLTtruecoldair.com)).

Thanks for the business. If you have any questions, please e-mail [info@JLTtruecoldair.com](mailto:info@JLTtruecoldair.com) or call 757-335-1940. Our hours are Monday-Friday. 8:00am – 5:00pm Eastern Time.

**JLT Performance Lifetime Satisfaction Guarantee.** We want you to be a JLT Performance customer for life! Your new JLT Performance product is warranted to be free from defects in materials and workmanship for the life of the *original retail purchaser*, subject to the limitations contained in our warranty found here. [www.jlttruecoldair.com/warranty](http://www.jlttruecoldair.com/warranty)

We guarantee workmanship, tunability and even a pathway to discounted upgrades for substantially improved items.

**Return Policy:** All returns will be subject to a 10%-25% restocking fee. Air Filters will not be accepted for return unless they are in original plastic sealed bag. Please visit [www.JLTtruecoldair.com](http://www.JLTtruecoldair.com) for complete return policy.

**Disclaimer:** JLT Performance Inc. makes no warranties whatsoever, expressed or implied, oral or written to any purchasers, except the warranty above. JLT Performance Inc. hereby specifically excludes from any implied warranty of merchantability or implied warranty of incidental, secondary, or consequential damages of any kind whatsoever. All purchasers and users of products manufactured by JLT Performance Inc. agree to hold harmless and indemnify JLT Performance Inc. from any and all claims arising from their use. Failure to receive notice of any or the limitations contained in this disclaimer shall not serve to extend liability to JLT Performance Inc. for any claims arising out of use of its products.